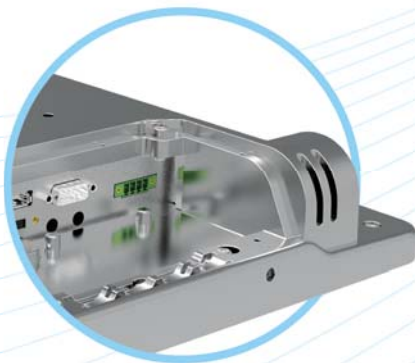


iV12



IGN ON/OFF



SUS 304
Stainless Steel Chassis



IP66
Water & Dust Resistance

SENOR



SPECIFICATIONS

PROCESSOR	Intel E3845 Quad Core 1.91 GHz
SYSTEM MEMORY	4 GB DDR3L-1333 RAM (up to 8 GB)
STORAGE DEVICE	2.5" industrial grade SSD

DISPLAY

SIZE / RESOLUTION	12.1" TFT LCD (LED backlight) / 1024 x 768 pixels
BRIGHTNESS	Auto brightness 250 to 700 cd/m ² (optional 1000 cd/m ²)
TOUCH SCREEN PANEL	Anti-glare projected capacitive touch (optional sunlight filter)

I/O INTERFACE

USB PORT	1 x USB 2.0, 1 x USB 3.0
SERIAL PORT	1 x DB9 (RS232 / RS422 / RS485 select by BIOS), optional COM2 (RS232)
VIDEO PORT	1 x Display port
ETHERNET PORT	2 x RJ45 10/100/1000 Mbps
FUNCTION KEYS	Up to 6 keys

OPERATING SYSTEM

WINDOWS	POSReady 7 / 7 Pro / 10 IoT / 10 Pro
---------	--------------------------------------

ENVIRONMENT & MECHANICAL SPECIFICATIONS

DIMENSIONS & WEIGHT	320 (W) x 312 (H) x 60 (D) mm 5 kg
CHASSIS MATERIAL	SUS 304 stainless steel
VESA PATTERN	75 x 75 mm
IP RATING	IP66 whole unit
SHOCK & VIBRATION	Class 5M3 (5 hours of noise type vibrations, 3.6 g rms and 30 g peak value)
TEMPERATURE	Operating: -20°C to 55°C Storage: -20°C to 60°C
HUMIDITY	20% to 80% (non-condensing)
POWER CONSUMPTION	24 VDC (10 to 36 VDC, isolation voltage 1500 VDC, input polarity protection)

MODEL OPTIONS

INTEGRATED CARD READER	RFID (13.56 MHz)
ANTENNA	Internal or External
CANBUS PORT	1 x isolated CANbus 2.0B
WIRELESS LAN	802.11 b/g/n/ac (2x2 MIMO), Bluetooth 4.1

ALL PRODUCT SPECIFICATIONS ARE SUBJECT TO CHANGE WITHOUT NOTICE.

The Senor Building

65 & 67 Weaver Street
Coopers Plains
QLD 4108, Australia

www.senortech.com.au

P: +61 7 3275 5888
sales@senortech.com.au



Quality. Safety. Versatility.